

EQUIP. TYPE *R390A/URR* EXP. NO.

*COL. 540 7461 002*

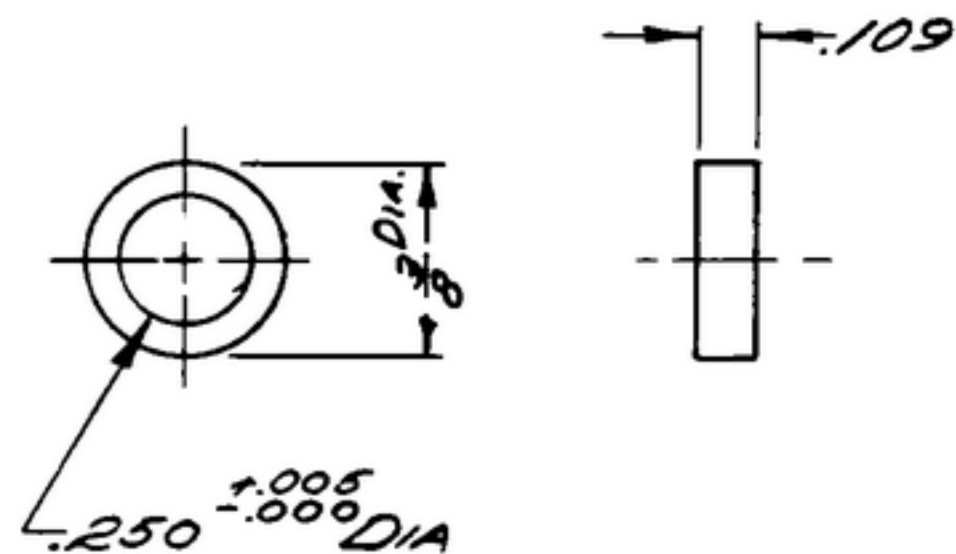
NOTICE: WHEN GOVERNMENT DRAWINGS, SPECIFICATIONS, OR OTHER DATA ARE USED FOR ANY PURPOSE OTHER THAN IN CONNECTION WITH A DEFINITELY RELATED GOVERNMENT PROCUREMENT OPERATION, THE UNITED STATES GOVERNMENT THEREBY INCURS NO RESPONSIBILITY FOR ANY OMISSION, WHATEVER, AND THE FACT THAT THE GOVERNMENT MAY HAVE FORMULATED, FURNISHED, OR IN ANY WAY SUPPLIED THE SAID DRAWINGS, SPECIFICATIONS, OR OTHER DATA IS NOT TO BE REGARDED BY IMPLICATION OR OTHERWISE AS IN ANY MANNER LICENSING THE HOLDER OR ANY OTHER PERSON OR CORPORATION, OR CONFERRING ANY RIGHTS OR PRIVILEGES TO MANUFACTURE, USE, OR SELL ANY PATENTED INVENTION THAT MAY IN ANY WAY BE RELATED THERETO.

THIS DOCUMENT HAS BEEN PURCHASED BY THE GOVERNMENT AND MAY BE REPRODUCED AND USED IN CONNECTION WITH ANY GOVERNMENT PROCUREMENT OR MAINTENANCE OPERATION.

\* FOR INFORMATION ONLY. CONTRACTOR MAY AT HIS OPTION DEVIATE FROM THESE PROCESS DETAILS.

~~X SWE APPROVAL~~  
SYM PR10042-5

REVISIONS			
SYM	DESCRIPTION	DATE	APPROVAL
A <sub>2</sub>	A <sub>1</sub> ADDED "IRIDITE #7" TO FINISH NOTE A <sub>2</sub> ADDED APPL SM-D-343 600	9 OCT 59	42428-PC 59-AI-51 REV'D PME



BRASS, COMP 22, TEMPER 1/2H, PER SPEC QQ-B-626

A<sub>1</sub> FINISH: CHEMICAL POLISH PER IRIDITE #7 METCOTE PROCESS BY ALLIED RESEARCH PRODUCTS, INC., BALTIMORE, MD., OR EQUAL.  
\* COLLINS 588 0034 00. (\* SAME AS 572167)

A<sub>2</sub>

COLLINS PART NO.	ITEM	REQD	PART NO.	DESCRIPTION	MATL.	MATL. SPEC.
LIST OF MATERIAL						
- COLLINS PART NO. 558 0249 002 -						

DRAWN <i>Hamer</i>			CHECKED <i>Am</i>			APPROVED			- COLLINS RADIO CO. - - DEAR RAPID, IOWA - 14214-PH- 51-93			DEPARTMENT OF THE ARMY SIGNAL CORPS ENGINEERING LABORATORIES  FORT MONMOUTH NEW JERSEY		
UNLESS OTHERWISE SPECIFIED: DECIMAL DIMENSIONS INCLUDING HOLE SIZES MAY VARY ±.005 FRACTIONAL DIMENSIONS INCLUDING HOLE SIZES MAY VARY ±1/64 MACHINED ANGLES MAY VARY ±.1° SHEARED ANGLES MAY VARY ±.25° BROKEN ANGLES MAY VARY ±.1° ECCENTRICITY BETWEEN ANY DIAMETERS ON THE SAME CENTERLINE SHALL NOT EXCEED .010 TOTAL INDICATOR READING. ALL DIMENSIONS ARE FINISH DIMENSIONS INCLUDING APPLIED FINISH AND ARE GIVEN IN INCHES.			REVIEWED <i>PME</i>			APPROVED <i>HLV</i> <i>PME</i>			<i>BUSHING - GEAR</i>					
558 0324 004 - 1			SM-D-343 600			SM-D-248 975						SC-DL-248 775		
- COLLINS NO. -			QTY			NEXT ASSY			USED ON			DATE <i>8 DEC 55</i> SCALE <i>2/1</i>		
APPLICATION														